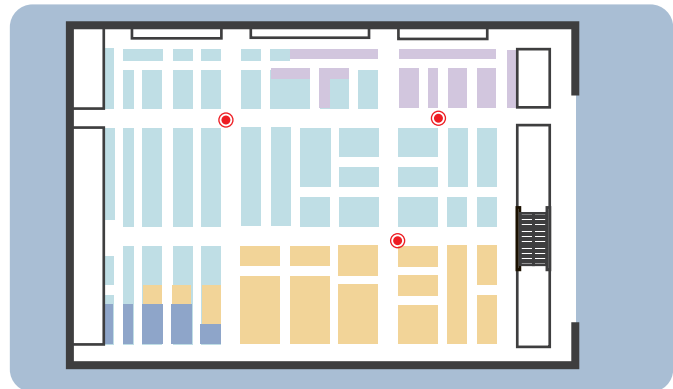


Bluetooth 5 Card Tag



The Card Tag compatible with Bluetooth 5 and has NFC Tag function and IP67 protection rating, suitable for personnel and application monitoring. Provide the card tags to your employees, staff or visitors to track their location and movement, and notify panic situations, task completion or other predefined events to the cloud by pressing the built-in button on the card tag.

Application



Features

- Bluetooth LE 5 Compatible: 2x speed / 4x long range / 8x advertising extension
- Built-in G-sensor into the tag to track its movement, get notifications when it falls off, is on the move, or changes its orientation.
- Use the data collected by the built-in Temperature sensor to analyze the environmental conditions over time or trigger alerts when needed.
- Get visual feedback from tag: Trigger the LED indicator to alert you about the status of the tag, locate your tags, or confirm successful user interaction.
- Power on / off, select mode or trigger event notification when button is pressed.
- Long battery life
- Built-in NFC Tag function (type 2)
- Waterproof design(IP67)
- Enterprise temperature design (-20°C~ 60°C)
- Beacon protocol compatible with iBeacon, Eddystone, Quappa or Wirepas

Specifications

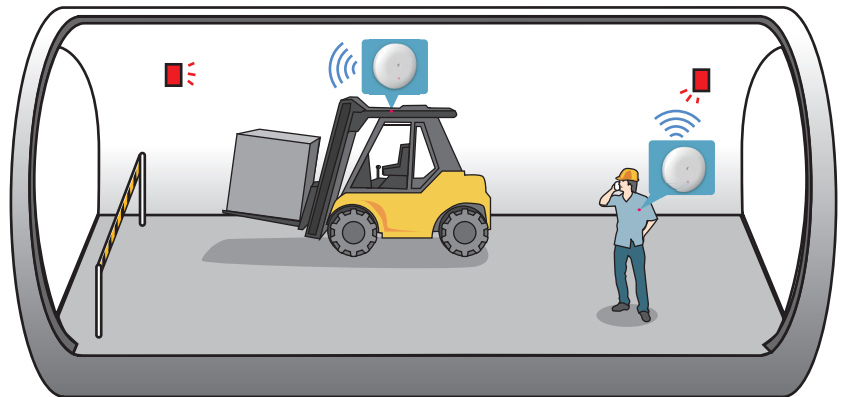
RF Protocol	BLE 5.0
Battery	CP224147(800mAh)
Battery Replaceable	No
Battery Lifetime	up to 20 month (Tx = -12dBm ; Interval: 350ms)
LED Indicator	Green LEDx1
Press Switch Button	Yes
Waterproof level	IP67
G-Sensor	Yes
Temperature Sensor	Yes
Operating Temperature	-20°C~ 60°C
Dimensions (mm)	85 x 54 x 4 mm

Specifications are subject to change without further notice.

Bluetooth 5 Robust Tag



Application



You can know which zone individuals and assets are currently located in.

BLE 5 Robust Tag provides real-time information on which zone individuals and assets are currently located in. The continuous monitoring of the construction progress at every stage enables highly efficient process control.

Features

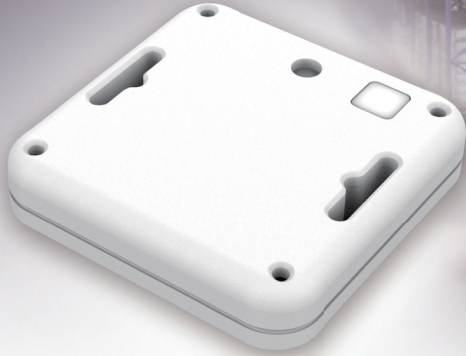
- Bluetooth LE 5 Compatible: 2x speed / 4x long range / 8x advertising extension
- Built-in G-sensor into the tag to track its movement, get notifications when it falls off, is on the move, or changes its orientation.
- Use the data collected by the built-in Temperature, Humidity, Air Pressure sensor to analyze the environmental conditions over time or trigger alerts when needed.
- Get visual feedback from tag: Trigger the LED indicator to alert you about the status of the tag, locate your tags, or confirm successful user interaction.
- Power on / off, select mode or trigger event notification when button is pressed.
- Long battery life
- Waterproof design(IP67)
- Wide temperature design (Enterprise: -20°C~ 60°C, Industrial: -40°C~ 85°C)
- Multiple sensors can be flexible combined
- Beacon protocol compatible with iBeacon, Eddystone, Quuppa or Wirepas

Specifications

RF Protocol	BLE 5.0
Battery	CR2477(2000mAh) x 2
Battery Replaceable	Yes
Battery Lifetime	up to 10 years (Tx = -12dBm ; Interval: 1s)
LED Indicator	Red LEDx1
Press Switch Button	Yes (Internal)
Waterproof level	IP67
G-Sensor	Yes
Temperature Sensor	Yes
Humidity Sensor	Option
Air Pressure Sensor	Option
Operating Temperature	-40°C~ 85°C
Dimensions (mm)	59 x 59 x 15 mm

Specifications are subject to change without further notice.

Bluetooth 5 Wearable Tag



Application

The Wearable Tag compatible with Bluetooth 5 and has NFC tag function and IP67 protection level, suitable for people and asset tracking.

The Wearable Tag can be worn on people by key ring or strap, or fixed to assets with double-sided tape. It can be applied to personnel or cargo flow management in warehouses, hospitals, exhibitions, amusement parks.



Features

- Bluetooth LE 5 Compatible: 2x speed / 4x long range / 8x advertising extension
- Built-in G-sensor into the tag to track its movement, get notifications when it falls off, is on the move, or changes its orientation.
- Use the data collected by the built-in Temperature, Air Pressure sensor to analyze the environmental conditions over time or trigger alerts when needed.
- Get visual feedback from tag: Trigger the LED indicator to alert you about the status of the tag, locate your tags, or confirm successful user interaction.
- Power on / off, select mode or trigger event notification when button is pressed.
- Long battery life
- Built-in NFC Tag function (type 2)
- Waterproof design(IP67)
- Wide temperature design (Enterprise: -20°C~ 60°C, Industrial: -40°C~ 85°C)
- Multiple sensors can be flexible combined
- Beacon protocol compatible with iBeacon, Eddystone, Quappa or Wirepas

Specifications

RF Protocol	BLE 5.0
Battery	CR2450(610mAh)
Battery Replaceable	No
Battery Lifetime	up to 15 month (Tx = -12dBm ; Interval: 350ms)
LED Indicator	Red LEDx1
Press Switch Button	Yes
Waterproof level	IP67
G-Sensor	Yes
Temperature Sensor	Yes
Air Pressure	Option
Operating Temperature	-40°C~ 85°C
Dimensions (mm)	43 x 43 x 8 mm

Specifications are subject to change without further notice.